

ENZO
Seating Series
2024 Catalogue

apêx



Enzo

With a perfectly designed outlook and gentle curves, the Enzo chair is elegant and stylish. As most of its parts are made from recycled material, the ENZO represents the beauty of simplicity and harmony between nature and human. Thus, its owner can relax with a clear conscience.

ENZO redefines office seating as it conveys a sense of ease, value and comfort. The chair's design and handling are equally ingenious. You can confidently tick all the boxes in terms of function and design, as ENZO is simply a seamless solution for all workspace.





Model Range



Features



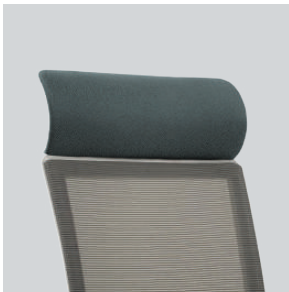
Adjustable 3D Armrest
Adjustable 3D armrest comes with PU pad for maximum comfort.



Sleek Nylon Leg Base
Sleek nylon high leg base designed to withstand heavy loads of up to 300 pounds with greater stability base.



Polypropylene Back Frame
Solid polypropylene back frame for durable and stylish look.



Comfortable Headrest
Comfortable headrest fitted with fabric or leather upholstery

Mesh Colour



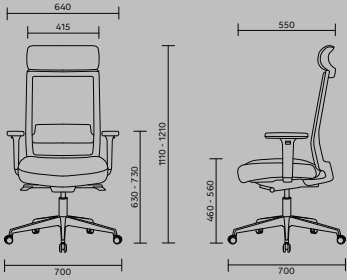
PU Leather Colour



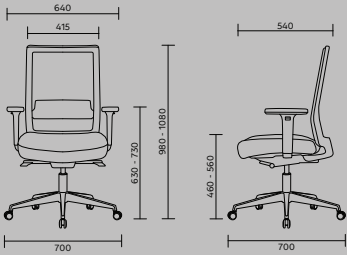
Fabric Colours



Enzo
Highback



Enzo
Lowback



APEX Office Furniture Exporter Sdn. Bhd. (591294-V)

728 & 730 Batu 4 ½ Jalan Ipoh,

51200 Kuala Lumpur,

Malaysia.

T +603-9779 7880

F +603-6251 7254

sales@apexof.com.my